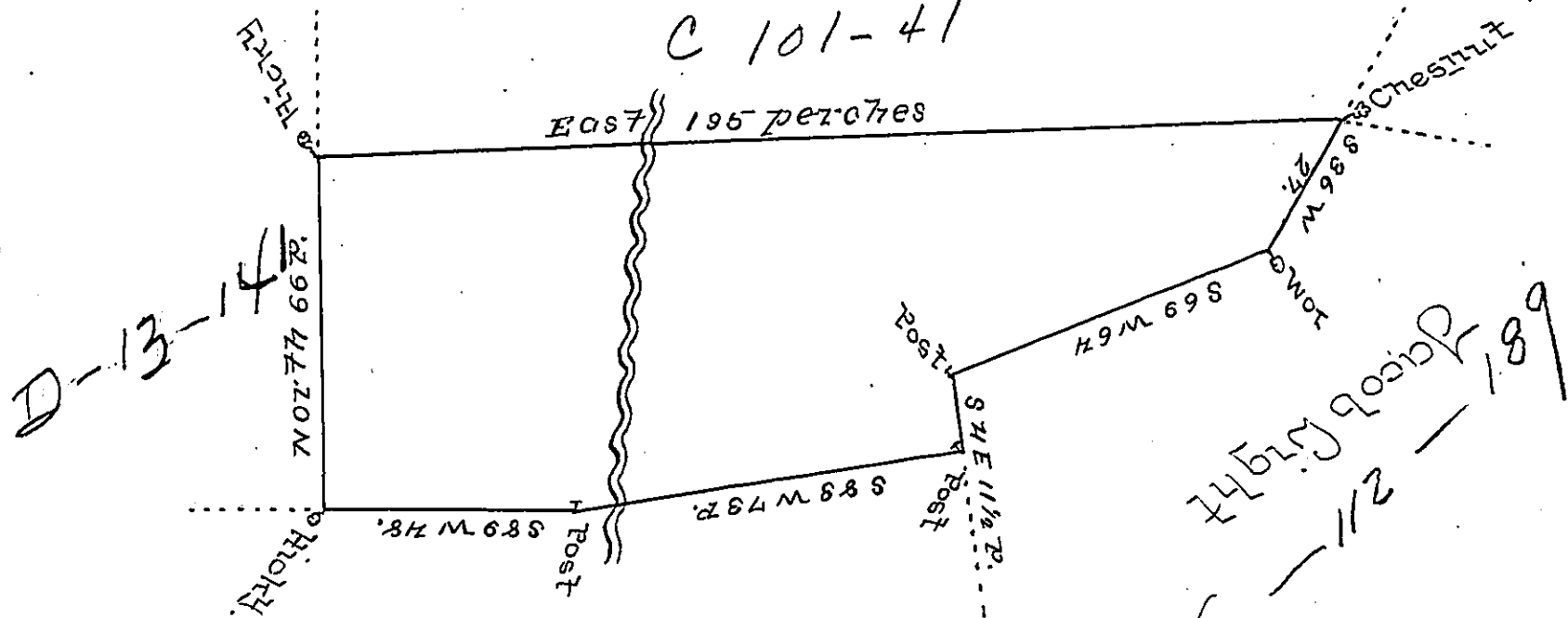


Henry Breubakers Land

C 101-41



Balker Shalley

A-37-19

By Virtue of a Warrant dated the Twenty Fourth day of May 1750 Surveyed the 12th day of March 1755 to Christopher Wilber in Right of John Bruniser The Above described Tract of Land Situate in Lebanon Township (Doughnut Late Lancaster) County Containing Fifty Six Acres and 133 Perches and Allowance of six Percent for Roads &c -

Thomas Clark D.S.

To John Lukens Esquire
 Surveyor General of Pennsylvania

IN TESTIMONY that the above is a copy of the original remaining on file in the Department of Internal Affairs of Pennsylvania, made conformably to an Act of Assembly approved the 16th day of February, 1833, I have hereunto set my Hand and caused the Seal of said Department to be affixed at Harrisburg, this sixth day of September 1898.

James W. Latta
 Secretary of Internal Affairs.